

# Scheme cost, benefits and funding

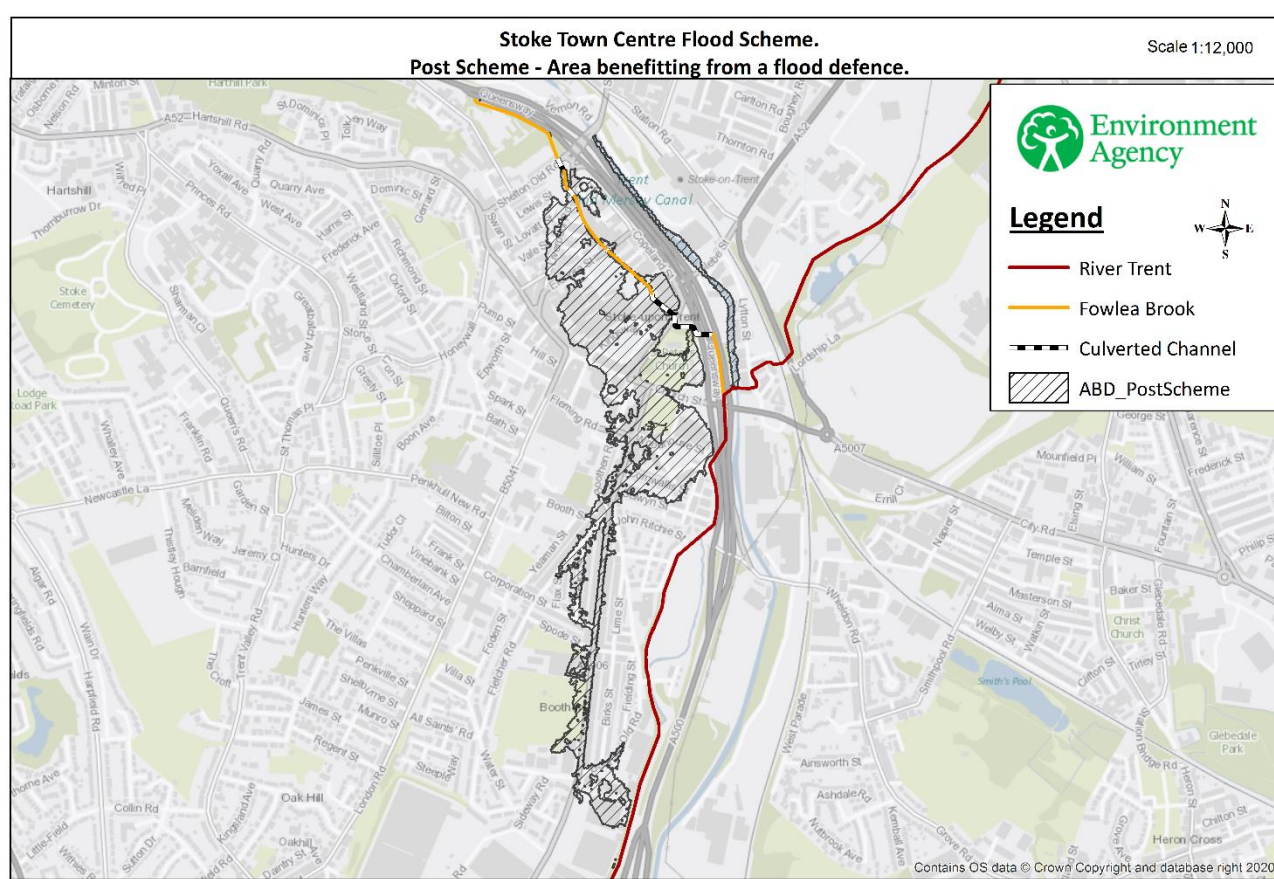
## Scheme Cost

The scheme is forecast to cost £6.2m including design, construction and an allowance for future maintenance.

## Benefits

Increasing the standard of protection from flooding along the Fowlea Brook results in a number a benefits, both direct and indirect:

- 214 residential properties better protected;
- 119 non-residential properties better protected;
- £62m in damages avoided;
- over 200,000m<sup>2</sup> of land currently classed as Flood Zone 3 which hampers regeneration is better protected enabling growth;
- creation of an area benefitting from a defence, shown in the map below;
- over £30m in regeneration income to the local economy; and
- potential job creation likely to be in excess of 150.



## Environmental Benefits:

Aside from the linear defences, we are taking the opportunity to partially renaturalise a section of the watercourse through the Spode site helping to deliver:

- 6.5km of the Fowlea Brook unlocked to fish migration through the removal of a weir;
- at least a 15% increase in biodiversity;
- improvements in water quality and the creation of new habitats; and
- a green amenity space alongside the channel through Spode.

## Funding:

The Environment Agency draw a large proportion of funding for schemes from the Defra flood defence funding settlement. This funding is allocated proportionately based upon the potential benefits from a scheme.

Funding source	Amount (£)
Defra Flood Defence Grant in Aid (FDGiA)	4,490,313
Trent Regional Flood & Coastal Committee Local Levy	640,239
Defra Growth Funding	500,000
Stoke & Staffordshire Local Enterprise Partnership	500,000
Stoke on Trent City Council	91,750
Private Contribution	50,000
<b>Total funding:</b>	<b>6,272,302</b>